

EWLA 10 YEARS: Law as politics - in societies at a crossroads

A Conference held in Brussels on 3 and 4 June 2010

PROGRAMME**Wednesday 2 June 2010**

19:00 Welcome reception at the restaurant La Chaloupe d'Or, Grand Place, Brussels

Thursday 3 June 2010

Venue: Representation of the Free State of Bavaria to the European Union
77 Rue Wiertz, 1000 Brussels

8:30-9:00 Registration

9:00-9:30 Welcome by the President of EWLA, Professor Dr. *Herdís Thorgeirsdóttir* and the Head of the Representation of the Free State of Bavaria to the European Union, Dr. *Angelika Schlunck*

9:30-10:00 Key note speaker: President of the European Council Mr *Herman van Rompuy*

10:00-10:30 Panel discussion: 10 years of EWLA achievements and perspectives
Chaired by *Sophia Spiliotopoulos*, past vice-president of EWLA
Past president of EWLA *Leena Linnainmaa*
Past president of EWLA *Elisabeth Kotthaus*
President of EWLA *Herdís Thorgeirsdóttir*

10:30-11:00 Coffee

11:00-11:25 Key note speaker: Vice-President of the European Parliament Ms *Diana Wallis*

11:25-11:40 Discussion with Ms *Wallis*

11:40-13:00 Panel discussion:

Women and management in a changing business world

Chaired by *Myriam van Varenbergh*, Partner, Keuleneer-Storm-Vannest-Van Varenbergh-Verhelst

- *Ann de Jaeger*, Managing Partner, Executive Learning Partnership
- *Mechthilde Maier*, Head of Group Diversity Management, Deutsche Telekom
- *Ann Sajavaara*, Senior Adviser, Confederation of Finnish Industries EK
- *Christel Verschaeren*, Director, IBM Belgium NV

13:00-14:30 Lunch

15:00 - 17:00 Parallel work shops:

* **The influence of globalisation on the changing landscape of human rights protection and politics in Europe**

Chaired by Professor Dr. *Beate Rudolf*, Director of the German Institute for Human Rights

- *Tanja Kleinsorge*, Council of Europe, Head of Secretariat, Social, Health and Family Affairs Committee, Parliamentary Assembly

Speakers of the work shop will be announced soon

* **The influence of globalisation on financial crisis and risk management**

Chaired by *Vanessa Williams*, partner Rochman Landau

- *Marie Donnay*, Senior Economist, Directorate Macroeconomic Stability, DG ECFIN
- *Maire Laitinen*, Head of Segment / B2B, Fondia Finland
- *Sibylle Spitzer*, Deputy General Counsel, Recticel Belgium
- *Corinna Ullrich*, Senior Policy Officer, European Commission, DG MARKT

* **The influence of globalisation on the position of women in the labour market**

Chaired by Dr. *Daniela Bankier*, Head of unit Equality between women and men, European Commission, DG Employment, Social Affairs, Equal Opportunities

- *Catelene Passchier*, Confederal Secretary, European Trade Union Confederation (ETUC)
- *Edith Bauer*, MEP, member of Committee on Women's Rights and Gender Equality (FEMM)
- *Minna Etu-Seppälä*, BUSINESSEUROPE
- *Béatrice Castellane*, Business Lawyer (Corporate Law and Arbitration)

Work shops will have a coffee break

17:00 – 17:30 Setting up EWLA working groups (for EWLA members only)

EWLA Working Group on Fundamental Rights

EWLA Working Group on Gender Equality

EWLA Working Group on Corporate and Business Matters

19:30 Gala dinner at Club de Warande in the Royal district of Brussels

Rue Zinner 1, 1000 Brussels

Friday 4 June

9:00- 9:45 Speech on the impact of new social media by *Ben Caudron*

9:45 -11:00 Panel discussion: **Gender equality on the European agenda**

- *Capitolina Díaz Martínez*, Director General of Equality in Employment, Equality Ministry of Spain

- Belinda Pyke, Director, European Commission, DG Employment
 - A member of the European Parliament (tbc)
- Other panelists will be announced soon

11:00-11:30 Coffee

11:30-13:00 Parallel work shops

* **Corporate governance and gender diversity**

Chaired by *Dace L. Luters-Thuermann*, MELS, Partner, Heitmann Vermeer Kolle, Dueseldorf/Germany and Sikora & Partners, Riga/Latvia

- *Livia Aliberti Amidani*, Founder, Aliberti Governance Advisors
- *Dominique de La Garanderie*, founding partner, La Garanderie & Partners
- *Elin Hurvenes*, Founder, Professional Boards Forum (tbc)
- *Gabriele C. Klug*, City Treasurer, Deutscher Juristinnenbund
- *Leena Linnainmaa*, Director, Central Chamber of Commerce of Finland

* **The influence of globalisation on family law**

Chaired by EWLA vice president, Prof. Dr. *Regula Kägi-Diener*, University of St. Gallen

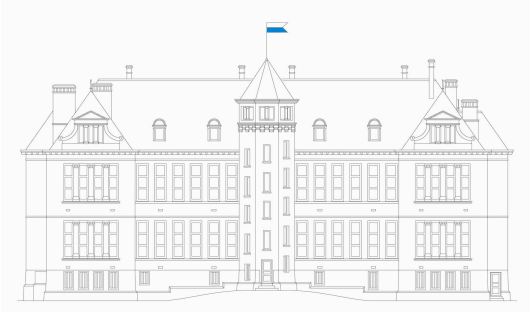
- *Maria del Rosaria Garcia Mariscal*, attorney at Law, García- Mariscal International Law Firm
 - Dr. *Katalin Daskalovics*, attorney-at-law, specialized in family law, Budapest
 - *Susanne Koehler*, attorney-at-law, Staab & Kollegen, Dresden
- Other speakers of the work shop will be announced soon

13:00- 14:00 Lunch

14:00- 15:00 Closing session, EWLA working-groups and General Assembly of EWLA

15:30 Special guided tour of the tourist attractions of Brussels or of the European Parliament

Supporters of EWLA 10th anniversary congress:



Representation of the Free State of Bavaria
to the European Union



Confederation of Finnish Industries



Hotels in Brussels

(please note, that these are recommendations only, participants are in charge of arranging for their own ac-commodations)

In the EU district, near the congress venue:

Radisson Blu EU Hotel

<http://www.radissonblu.com/euhotel-brussels>

Renaissance Brussels Hotel

<http://www.marriott.com/hotels/travel/brubr-renaissance-brussels-hotel/>

In the centre of Brussels:

Hotel Metropole

<http://www.metropolehotel.com/>

Royal Windsor Hotel

<http://www.royalwindsorbrussels.com/>

Radisson Blu Royal Hotel

<http://www.radissonblu.com/royalhotel-brussels>

For more information on Brussels, please visit:

Brussels tourist office: <http://www.brussels.org/>

Brussels International: <http://www.brusselsinternational.be/wabxlint/en/visitor/brussels-tourism-visit.act>

Brussels Airport: <http://www.brusselsairport.be/en/>

Brussels public transport: <http://www.stib.be/netplan-plan-reseau.html?l=en>